



# Installation Quick Start

---

## SUSE Linux Enterprise Desktop 15 SP1

This Quick Start guides you step-by-step through the installation of SUSE® Linux Enterprise Desktop 15 SP1.

Publication Date: May 14, 2019

## Contents

- 1 Welcome to SUSE Linux Enterprise Desktop 2
- 2 Legal Notice 28
- 3 GNU Free Documentation License 28

# 1 Welcome to SUSE Linux Enterprise Desktop

Use the following procedures to install the product on all supported hardware platforms. They assume you have successfully booted into the installation system. For more detailed installation instructions and deployment strategies, refer to the *Book "Deployment Guide"*. For preparations required to boot into the installation system, refer to *Book "Deployment Guide", Chapter 2 "Installation on AMD64 and Intel 64"*.

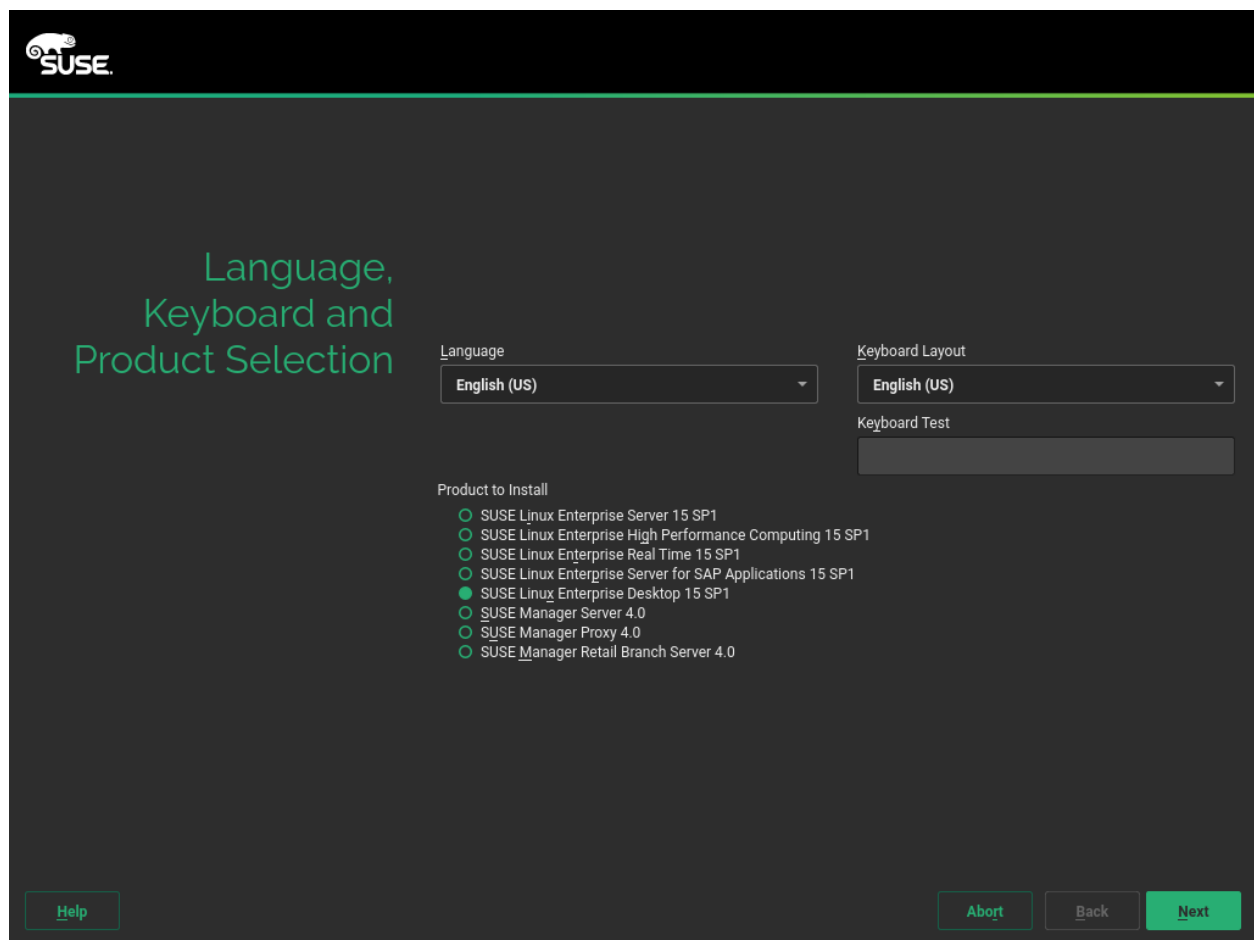
## 1.1 The Default Installation Procedure

Starting with SUSE Linux Enterprise Desktop 15, the installation medium only consists of the Installer, a minimal, command line-based system for installing, updating and registering SUSE Linux Enterprise Desktop. During the installation you can add functionality by selecting modules to be installed on top of the Installer.

A default installation requires network access to either contact the SUSE Customer Center or a local Repository Mirroring Tool server to retrieve repository data for the modules. In case you want to perform an installation without network access, a second installation medium, the SLE-15-SP1-Packages image, is required.

To install SUSE Linux Enterprise Desktop, boot into the installer from the Installer medium and start the installation.

## 1.1.1 Language, Keyboard, and Product Selection



The *Language* and *Keyboard Layout* settings are initialized with the language you chose on the boot screen. If you did not change the default, it will be English (US). Change the settings here, if necessary. Use the *Keyboard Test* text box to test the layout.

With the Installer you can install all SUSE Linux Enterprise base products:

- SUSE Linux Enterprise Server 15 SP1 (refer to <https://www.suse.com/documentation/sles/> for installation instructions)
- SUSE Linux Enterprise Desktop 15 SP1 (covered here)
- SUSE Linux Enterprise High Performance Computing 15 SP1
- SUSE Linux Enterprise Real Time 15 SP1 (refer to <https://www.suse.com/documentation/slerte/> for installation instructions)

- SUSE Linux Enterprise Server for SAP Applications 15 SP1 (refer to <https://www.suse.com/documentation/sles-for-sap/> for installation instructions)
- SUSE Manager Server 4.0 (refer to <https://www.suse.com/documentation/suse-manager/> for installation instructions)
- SUSE Manager Proxy 4.0 (refer to <https://www.suse.com/documentation/suse-manager/> for installation instructions)
- SUSE Manager Retail Branch Server 4.0 (refer to <https://www.suse.com/documentation/suse-manager-for-retail/> for installation instructions)

Select a product for installation. You need to have a registration code for the respective product. In the course of this document it is assumed you have chosen SUSE Linux Enterprise Desktop. Proceed with *Next*.

### 1.1.2 License Agreement

**SUSE**

Language  
English (US)

## SUSE Linux Enterprise Desktop 15 SP1 License Agreement

SUSE(R) Linux Enterprise End User License Agreement for the following SUSE products:

- SUSE Linux Enterprise Server 15
- SUSE Linux Enterprise Server for SAP Applications 15
- SUSE Linux High Availability Extension 15
- SUSE Linux Enterprise HPC 15
- SUSE Linux Enterprise Desktop 15
- SUSE Linux Enterprise Workstation Extension 15
- SUSE Linux Enterprise Live Patching 15

PLEASE READ THIS AGREEMENT CAREFULLY. BY PURCHASING, INSTALLING, DOWNLOADING OR OTHERWISE USING THE SOFTWARE (INCLUDING ITS COMPONENTS), YOU AGREE TO THE TERMS OF THIS AGREEMENT. IF YOU DO NOT AGREE WITH THESE TERMS, YOU ARE NOT PERMITTED TO DOWNLOAD, INSTALL OR USE THE SOFTWARE AND YOU SHOULD NOTIFY THE PARTY FROM WHICH YOU PURCHASED THE SOFTWARE TO OBTAIN A REFUND. AN INDIVIDUAL ACTING ON BEHALF OF AN ENTITY REPRESENTS THAT HE OR SHE HAS THE AUTHORITY TO ENTER INTO THIS AGREEMENT ON BEHALF OF THAT ENTITY.

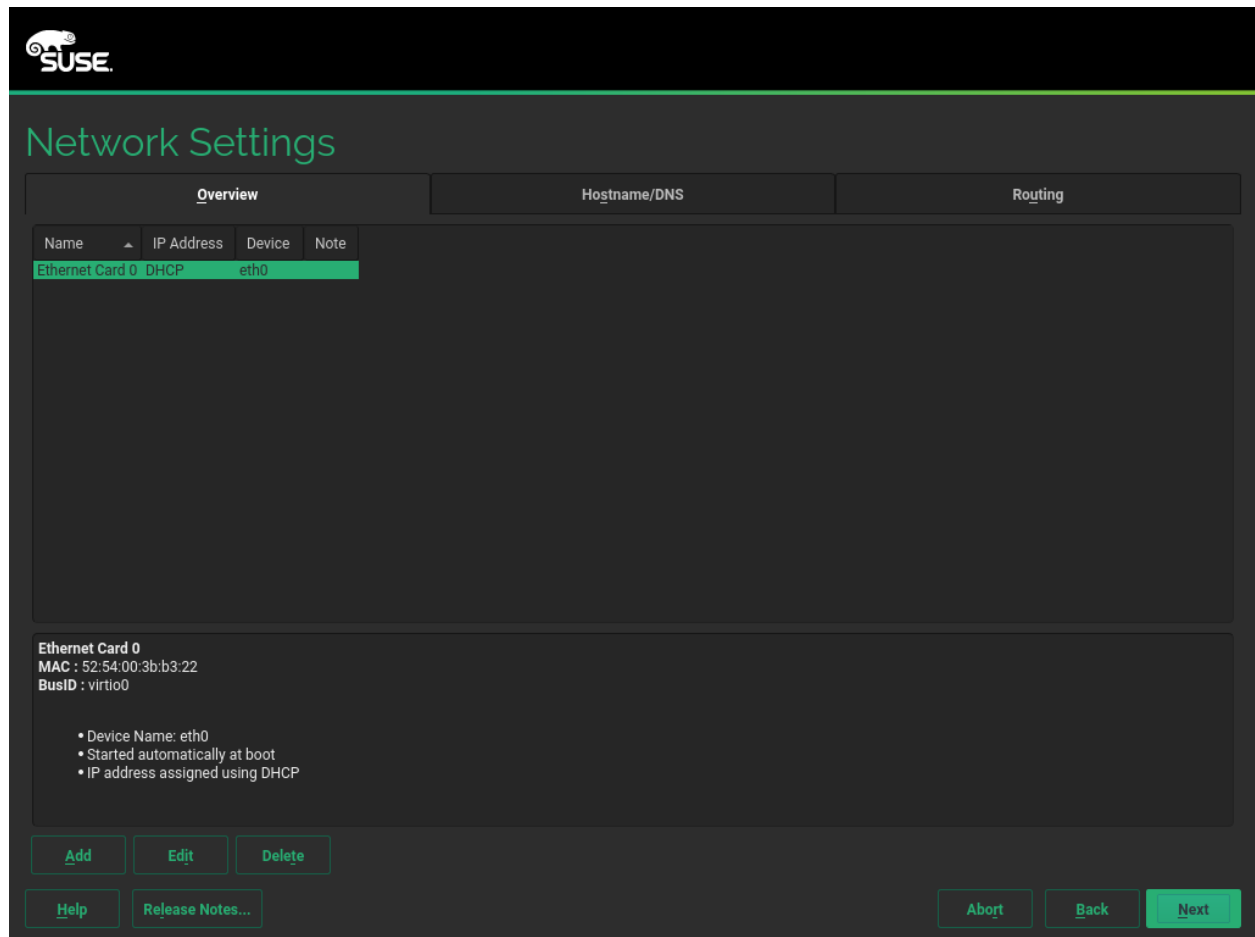
This End User License Agreement ("Agreement") is a legal agreement between You (an entity or a person) and SUSE LLC ("Licensor"). The software products identified in the title of this Agreement for which You have acquired licenses, any media or reproductions (physical or virtual) and accompanying documentation (collectively the "Software") is protected by the copyright laws and treaties of the United States ("U.S.") and other countries and is subject to the terms of this Agreement. If the laws of Your principal place of business require contracts to be in the local language to be enforceable, such local language version may be obtained from Licensor upon written request and shall be deemed to govern Your purchase of licenses to the Software. Any add-on, extension, update, mobile application, module, adapter or support release to the Software that You may download or receive that is not accompanied by a license agreement is Software and is governed by this Agreement. If the Software is an update or support release, then You must have validly licensed the version and quantity of the Software being updated or supported in order to install or use the update or support release.

I Agree to the License Terms.

[Help](#) [Abort](#) [Back](#) [Next](#)

Read the License Agreement. It is presented in the language you have chosen on the boot screen. Translations are available via the *License Language* drop-down box. You need to accept the agreement by checking *I Agree to the License Terms* to install SUSE Linux Enterprise Desktop. Proceed with *Next*.

### 1.1.3 Network Settings

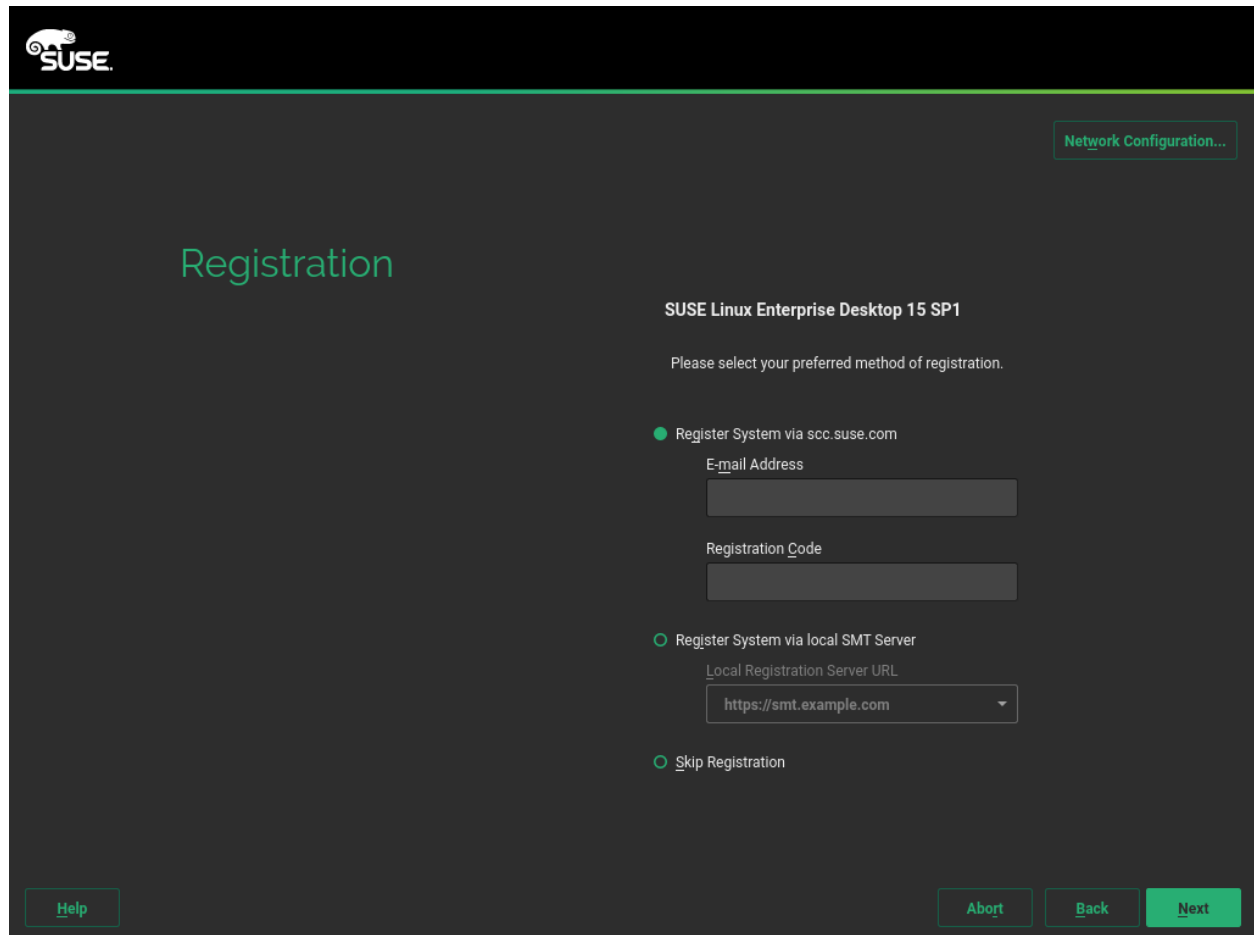


A system analysis is performed, where the installer probes for storage devices, and tries to find other installed systems. If the network was automatically configured via DHCP during the start of the installation, you will be taken to the registration step.

If the network is not yet configured, the *Network Settings* dialog opens. Choose a network interface from the list and configure it with *Edit*. Alternatively, *Add* an interface manually. See *Book "Deployment Guide", Chapter 4 "Installation Steps", Section 4.5 "Network Settings"* and *Book "Adminis-*

tration Guide”, Chapter 17 “Basic Networking”, Section 17.4 “Configuring a Network Connection with YaST” for more information. If you prefer to do an installation without network access, skip this step without making any changes and proceed with *Next*.

### 1.1.4 Registration



To get technical support and product updates, you need to register and activate your product with the SUSE Customer Center or a local registration server. Registering SUSE Linux Enterprise Desktop at this stage also grants you immediate access to the update repository. This enables you to install the system with the latest updates and patches available.

When registering, repositories and dependencies for the modules and extensions, which you may install with the next step, are loaded from the registration server.

If you are offline or want to skip registration, activate *Skip Registration*. Proceed with the installation by following the instructions in [Section 1.2, “Installing without Registration”](#).

To register with the SUSE Customer Center, enter the *E-mail Address* associated with your SCC account and the *Registration Code* for SUSE Linux Enterprise Desktop. If your organization provides a local registration server, you may alternatively register there. Activate *Register System via local SMT Server* and either choose a URL from the drop-down box or type in an address.



## Note: Trusting Repositories

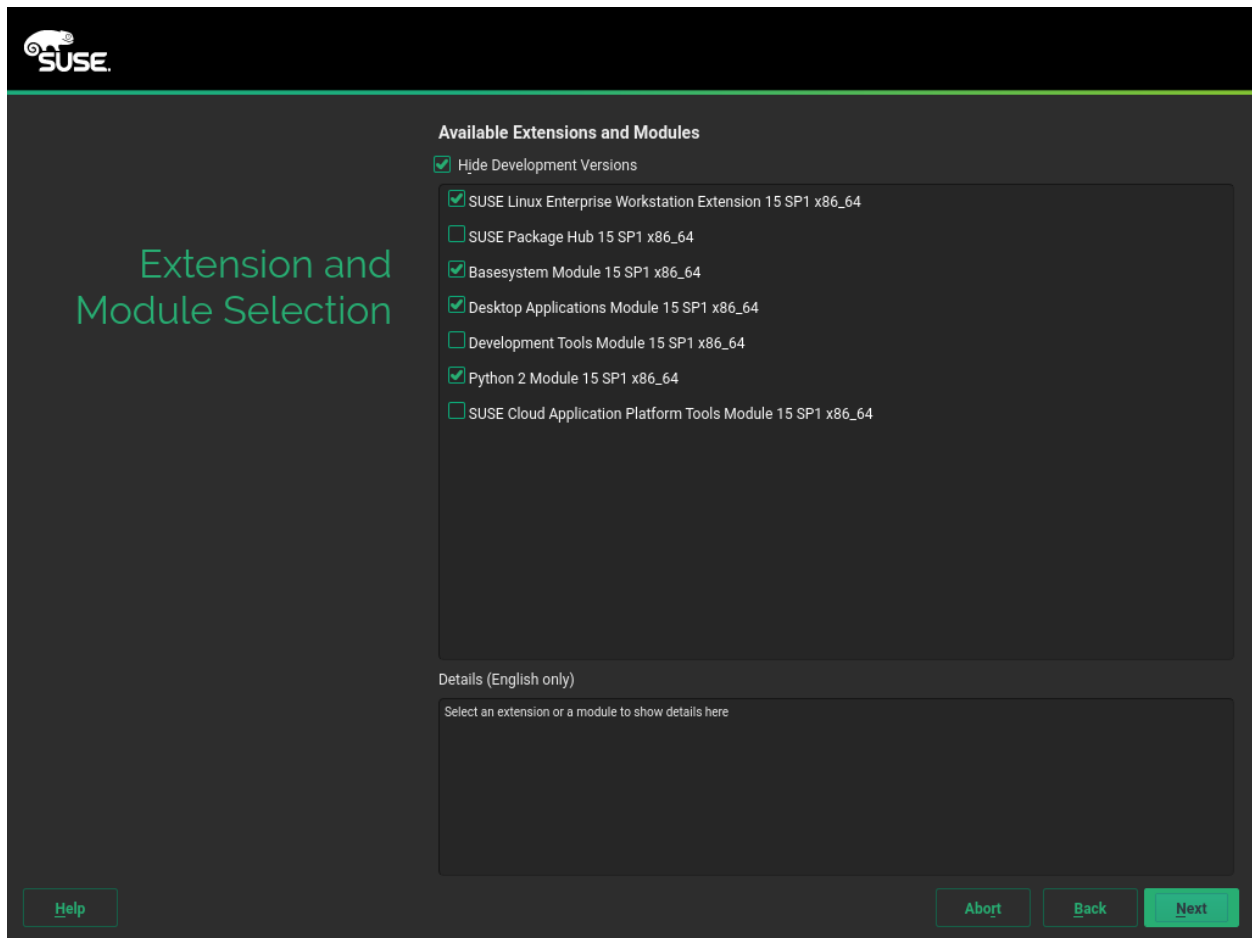
Depending on your hardware, additional repositories containing hardware drivers may be added during the registration. If so, you will be asked to *Trust* each of these repositories.



## Tip: Installing Product Patches at Installation Time

After SUSE Linux Enterprise Desktop has been successfully registered, you are asked whether to install the latest available online updates during the installation. If choosing *Yes*, the system will be installed with the most current packages without having to apply the updates after installation. Activating this option is recommended.

## 1.1.5 Extension and Module Selection



After the system is successfully registered, the installer lists modules and extensions that are available for SUSE Linux Enterprise Desktop. Modules are components which allow you to shape the product according to your needs. They are free of charge. Extensions add functionality to your product. They are offered as subscriptions and require a registration key that is liable for costs.

The availability of certain modules or extensions depends on the product you have chosen in the first step of this installation. For a description of the modules and their lifecycles, select a module to see the accompanying text. More detailed information is available in the [Modules and Extensions Quick Start](#) and the [Release Notes \(https://www.suse.com/releasenotes/x86\\_64/SUSE-SLES/15/#Intro.Module\)](https://www.suse.com/releasenotes/x86_64/SUSE-SLES/15/#Intro.Module).

The selection of modules indirectly affects the scope of the installation, because it defines which software sources (repositories) are available for installation and in the running system.



The following modules and extensions are available for SUSE Linux Enterprise Desktop:

### **Basesystem Module**

This module adds a basic system on top of the Installer. It is required by all other modules and extensions. The scope of an installation that only contains the base system is comparable to the installation pattern *minimal system* of previous SUSE Linux Enterprise Desktop versions. This module is selected for installation by default and should not be deselected.

*Dependencies:* None

### **Desktop Applications Module**

Adds a graphical user interface and essential desktop applications to the system. This module is selected for installation by default; deselecting it is not recommended.

*Dependencies:* Basesystem

### **Development Tools Module**

Contains compilers (including `gcc`) and libraries required for compiling and debugging applications. Replaces the former Software Development Kit (SDK).

*Dependencies:* Basesystem, Desktop Applications

### **Python 2 Module**

SUSE Linux Enterprise 15 SP1 uses Python version 3. This module contains the Python 2 runtime and modules. It is selected for installation by default; deselecting it is not recommended.

*Dependencies:* Basesystem

### **SUSE Cloud Application Platform Tools Module**

Adds tools allowing you to interact with a SUSE Cloud Application Platform product.

*Dependencies:* Basesystem

### **SUSE Linux Enterprise Workstation Extension**

Contains additional desktop tools such as an office suite or multimedia software such as music and video players. This extension is included in the SUSE Linux Enterprise Desktop subscription and is selected for installation by default; deselecting it is not recommended.

*Dependencies:* Basesystem, Desktop Applications

### **SUSE Package Hub**

Provides access to packages for SUSE Linux Enterprise Desktop maintained by the openSUSE community. These packages are delivered without L3 support and do not interfere with the supportability of SUSE Linux Enterprise Desktop. For more information refer to <https://packagehub.suse.com/>.

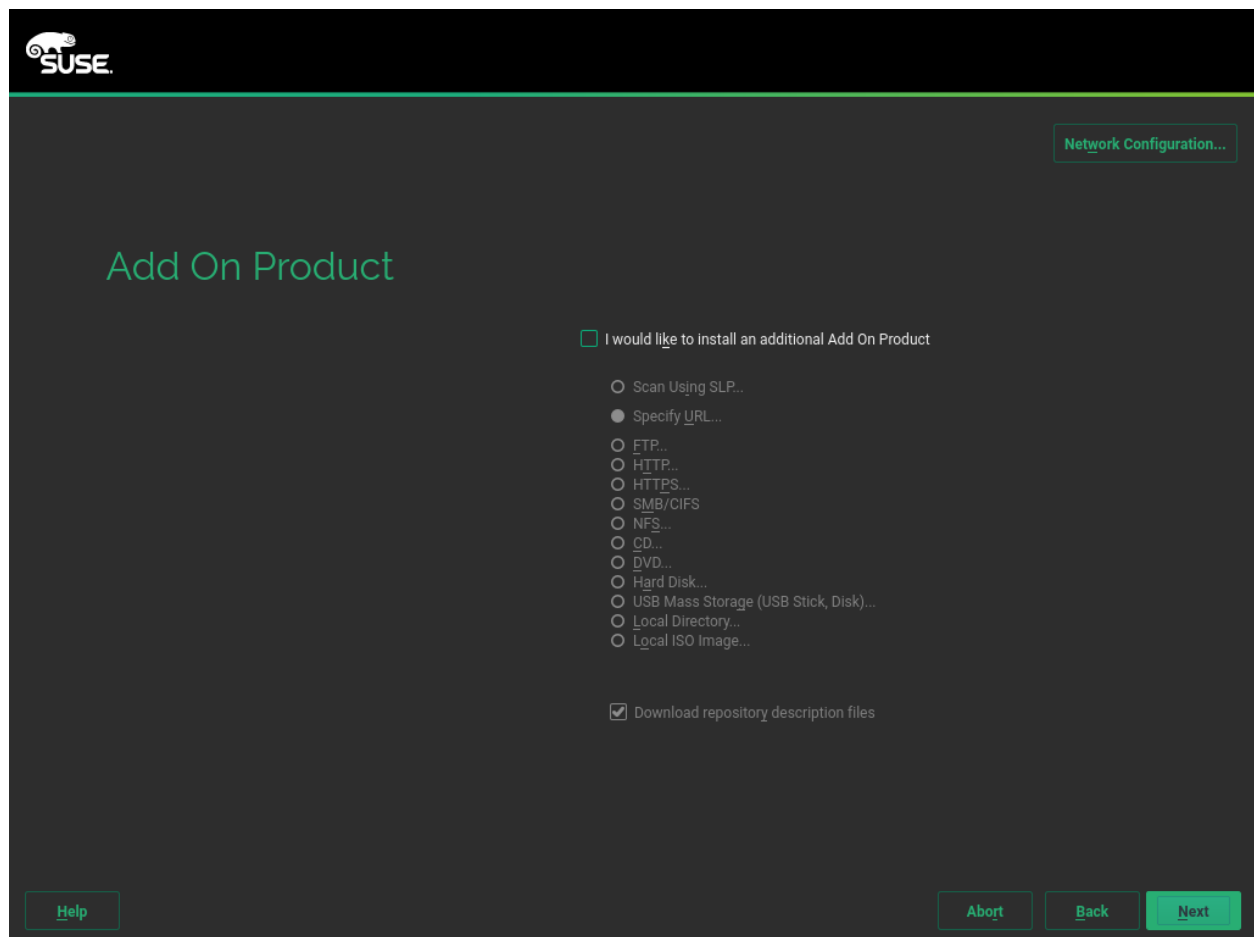
## Dependencies: Basesystem

Some modules depend on the installation of other modules. Therefore, when selecting a module, other modules may be selected automatically to fulfill dependencies.

Depending on the product, the registration server can mark modules and extensions as recommended. Recommended modules and extensions are preselected for registration and installation. To avoid installing these recommendations, deselect them manually.

Select the modules and extension you would like to install and proceed with *Next*. In case you have chosen one or more extensions, you will be prompted to provide the respective registration codes. Depending on your choice, it may also be necessary to accept additional license agreements.

### 1.1.6 Add-On Product



The *Add-On Product* dialog allows you to add additional software sources (so-called “repositories”) to SUSE Linux Enterprise Desktop, that are not provided by the SUSE Customer Center. Such add-on products may include third-party products and drivers or additional software for your system.



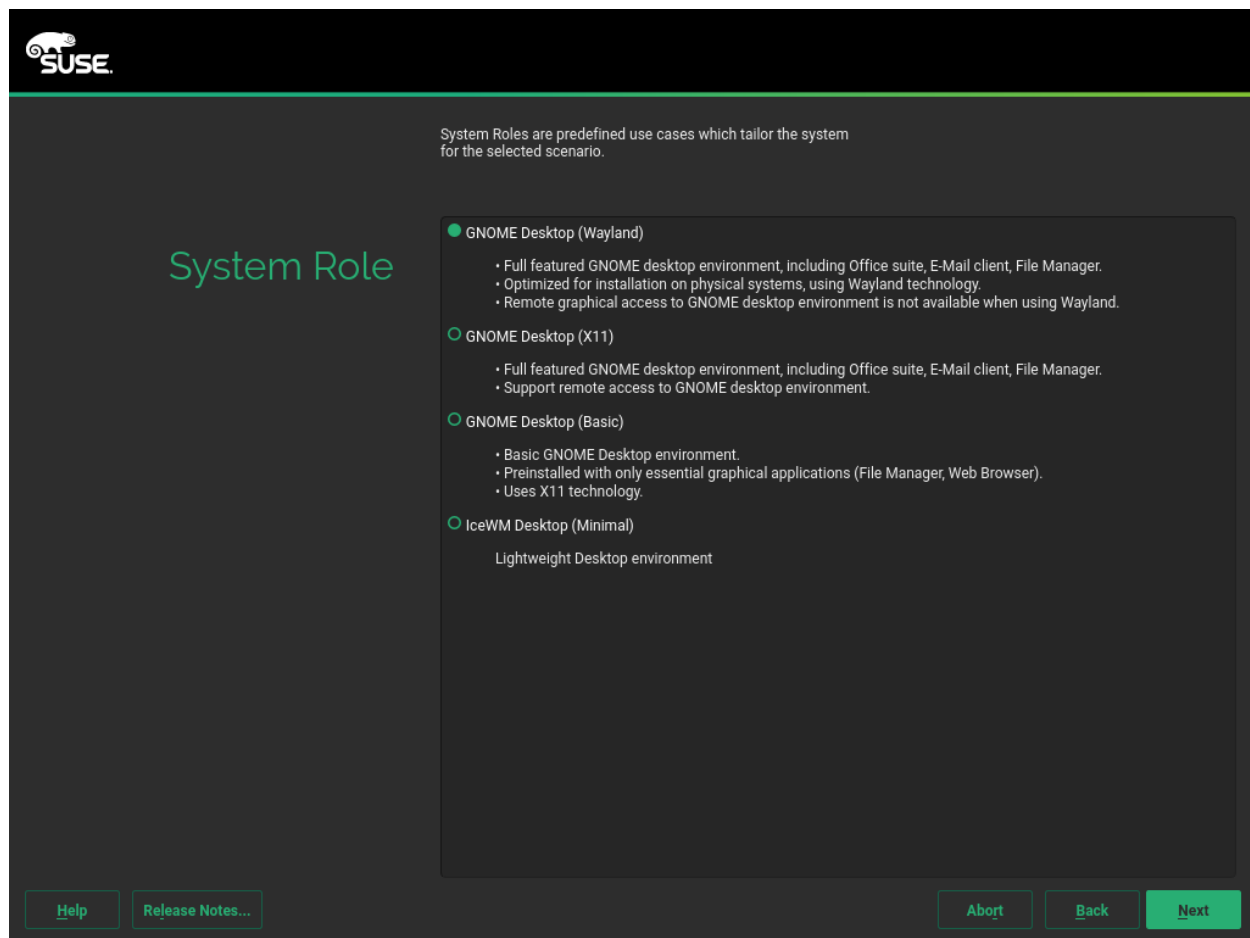
## Tip: Adding Drivers During the Installation

You can also add driver update repositories via the *Add-On Product* dialog. Driver updates for SUSE Linux Enterprise are provided at <http://drivers.suse.com/>. These drivers have been created via the SUSE SolidDriver Program.

If you want to skip this step, proceed with *Next*. Otherwise activate *I would like to Install an Add-on Product*. Specify a media type, a local path, or a network resource hosting the repository and follow the on-screen instructions.

Check *Download Repository Description Files* to download the files describing the repository now. If deactivated, they will be downloaded after the installation has started. Proceed with *Next* and insert a medium if required. Depending on the product's content it may be necessary to accept additional license agreements. Proceed with *Next*. If you have chosen an add-on product requiring a registration key, you will be asked to enter it before proceeding to the next step.

## 1.1.7 System Role

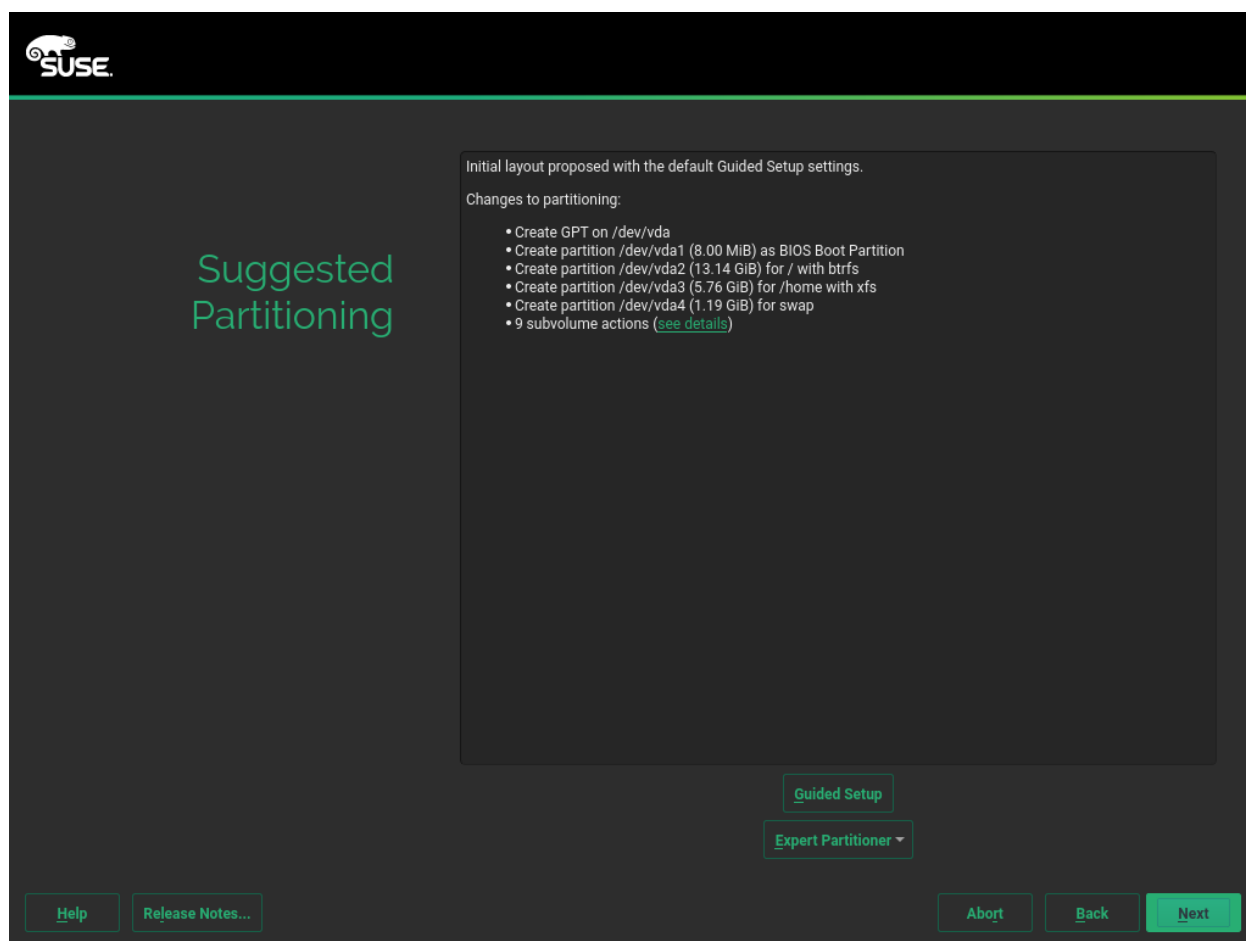


The availability of system roles depends on your selection of modules and extensions. System roles define, for example, the partitioning proposal and the set of software patterns that is going to be preselected for the installation. Refer to the description on screen to make your choice. Select a role and proceed with *Next*.

### Tip: Release Notes

From this point on, the Release Notes can be viewed from any screen during the installation process by selecting *Release Notes*.

## 1.1.8 Suggested Partitioning



Review the partition setup proposed by the system. If necessary, change it. You have the following options:

### ***Guided Setup***

Starts a wizard which lets you refine the partitioning proposal. Options available here depend on your system setup. In case it contains more than a single hard disk, you may choose which disk(s) to use and where to place the root partition. If the disk(s) already contain partitions, decide whether to remove or resize them.

In subsequent steps you may also add LVM support and disk encryption. You can change the file system for the root partition and decide whether to have a separate home partition or not.

### ***Expert Partitioner***

Opens the *Expert Partitioner* described in Book “Deployment Guide”, Chapter 6 “Expert Partitioner”, Section 6.1 “Using the Expert Partitioner”. This gives you full control over the partitioning setup and lets you create a custom setup. This option is intended for experts.

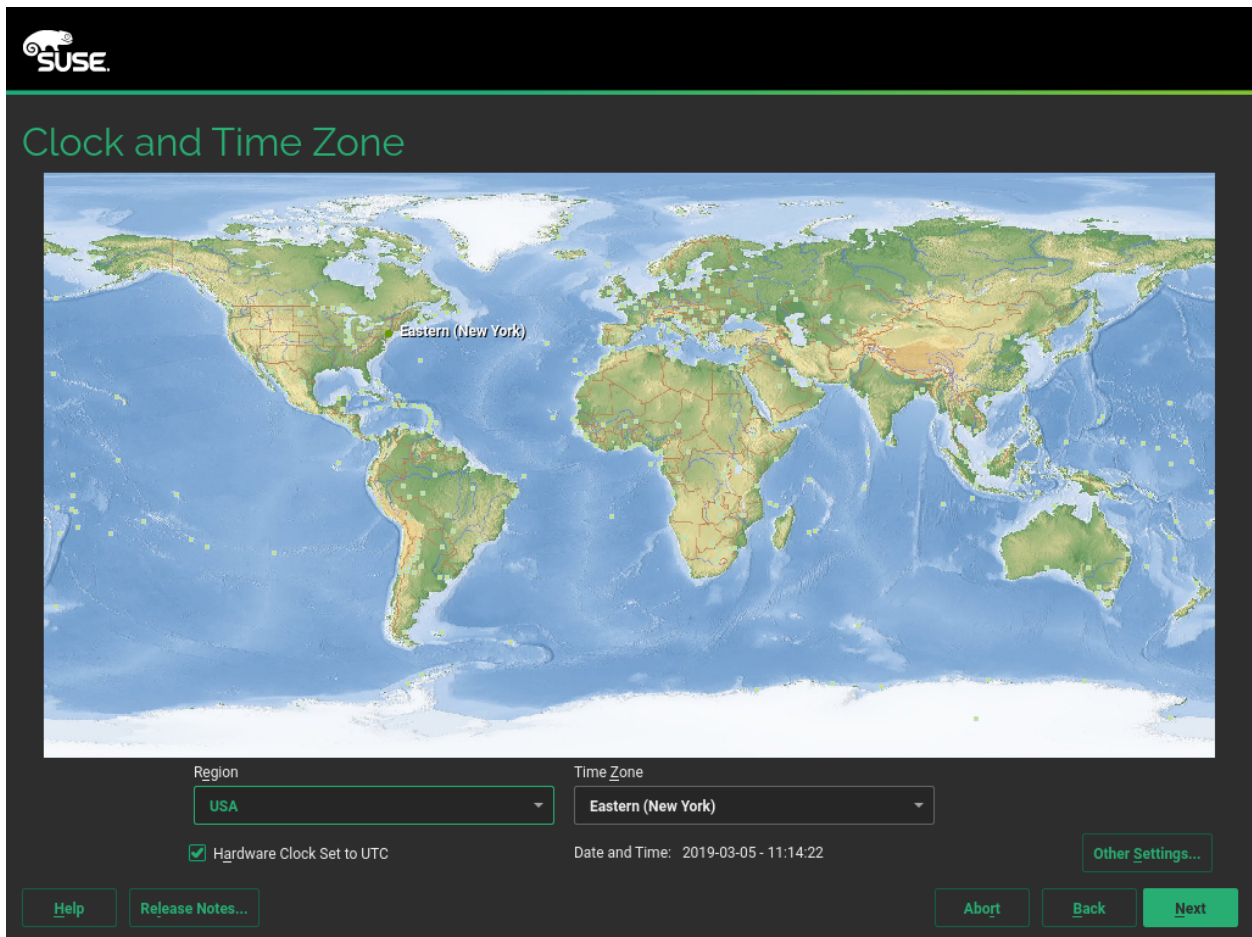
To accept the proposed setup without any changes, choose *Next* to proceed.



## Tip: Release Notes

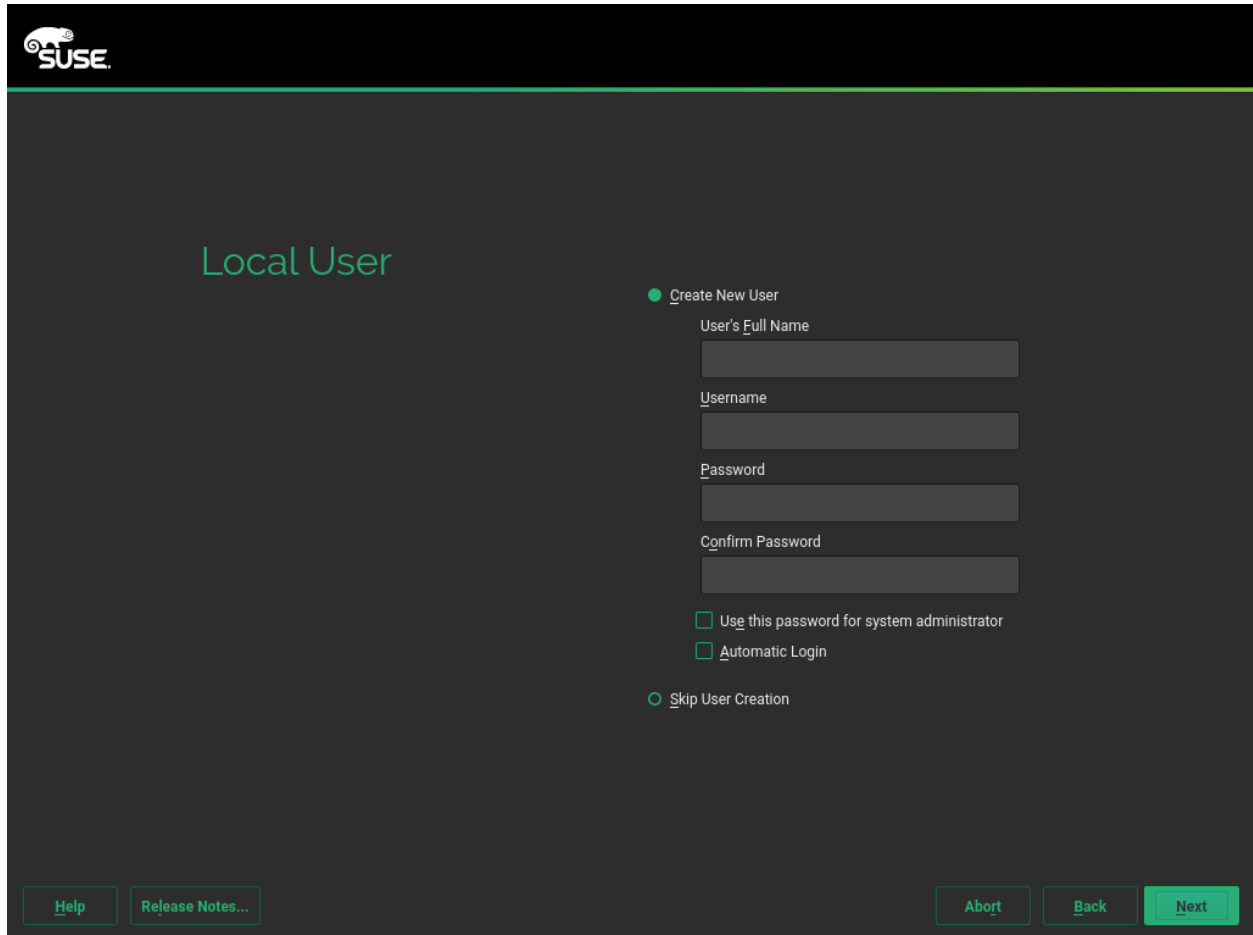
From this point on, the Release Notes can be viewed from any screen during the installation process by selecting *Release Notes*.

### 1.1.9 Clock and Time Zone



Select the clock and time zone to use in your system. To manually adjust the time or to configure an NTP server for time synchronization, choose *Other Settings*. See *Book "Deployment Guide", Chapter 4 "Installation Steps", Section 4.11 "Clock and Time Zone"* for detailed information. Proceed with *Next*.

### 1.1.10 Local User



The screenshot shows the 'Local User' configuration window. The SUSE logo is in the top left. The title 'Local User' is displayed in green. The 'Create New User' option is selected with a green radio button. Below it are four text input fields: 'User's Full Name', 'Username', 'Password', and 'Confirm Password'. There are two checkboxes: 'Use this password for system administrator' and 'Automatic Login', both of which are currently unchecked. At the bottom, there are five buttons: 'Help', 'Release Notes...', 'Abort', 'Back', and 'Next'. The 'Next' button is highlighted in green.

To create a local user, type the first and last name in the *User's Full Name* field, the login name in the *Username* field, and the password in the *Password* field.

The password should be at least eight characters long and should contain both uppercase and lowercase letters and numbers. The maximum length for passwords is 72 characters, and passwords are case-sensitive.

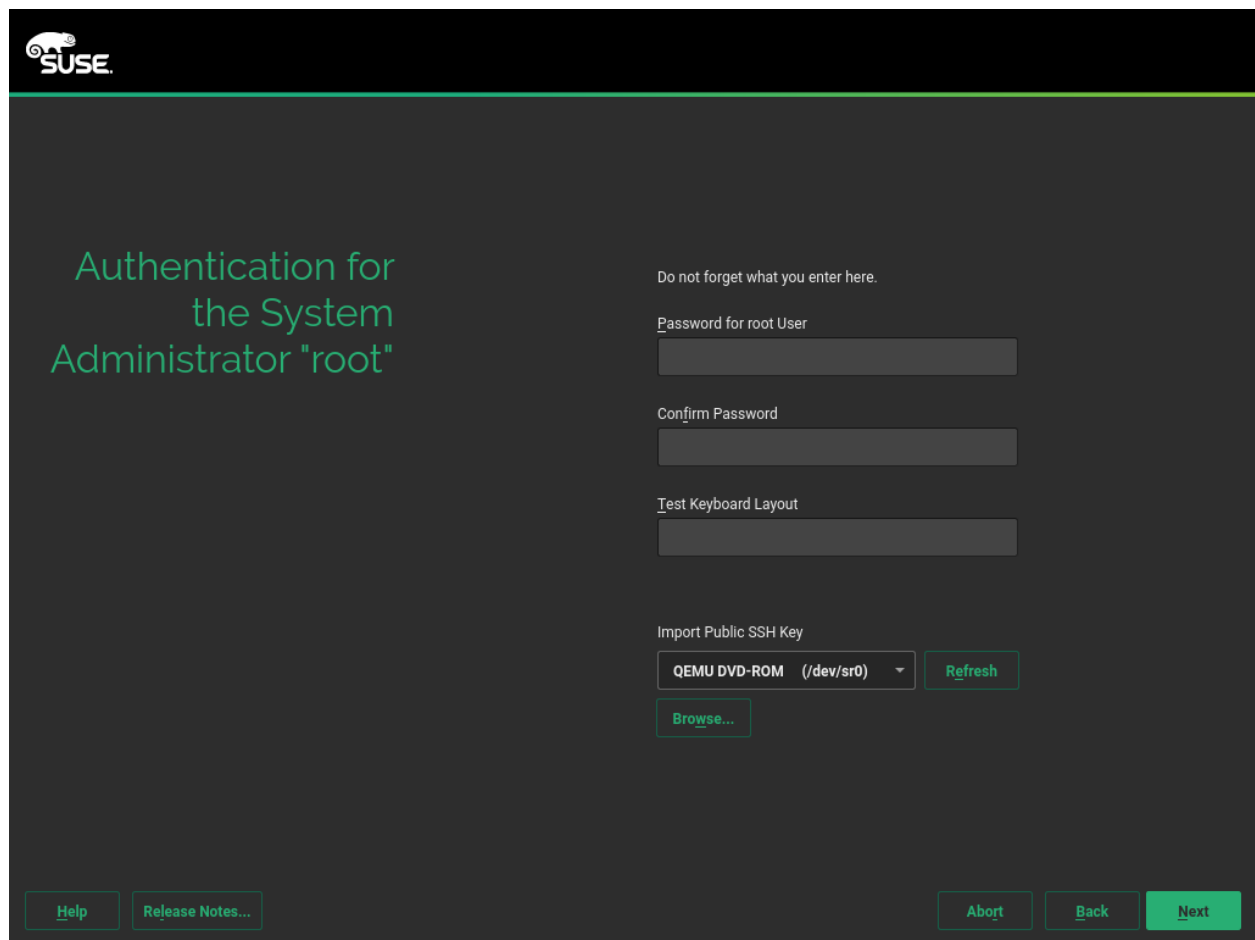
For security reasons it is also strongly recommended *not* to enable the *Automatic Login*. You should also *not Use this Password for the System Administrator* but rather provide a separate root password in the next installation step.

If you install on a system where a previous Linux installation was found, you may *Import User Data from a Previous Installation*. Click *Choose User* for a list of available user accounts. Select one or more user.

In an environment where users are centrally managed (for example by NIS or LDAP) you may want to skip the creation of local users. Select *Skip User Creation* in this case.

Proceed with *Next*.

### 1.1.11 Authentication for the System Administrator "root"



The screenshot shows the SUSE installation interface for setting up the root user. The title is "Authentication for the System Administrator 'root'". The interface includes a warning "Do not forget what you enter here." and three input fields: "Password for root User", "Confirm Password", and "Test Keyboard Layout". Below these is an "Import Public SSH Key" section with a dropdown menu showing "QEMU DVD-ROM (/dev/sr0)", a "Refresh" button, and a "Browse..." button. At the bottom, there are buttons for "Help", "Release Notes...", "Abort", "Back", and "Next".

Type a password for the system administrator (called the root user) or provide a public SSH key. If you want, you can use both.

Because the root user is equipped with extensive permissions, the password should be chosen carefully. You should never forget the root password! After you entered it here, the password cannot be retrieved.



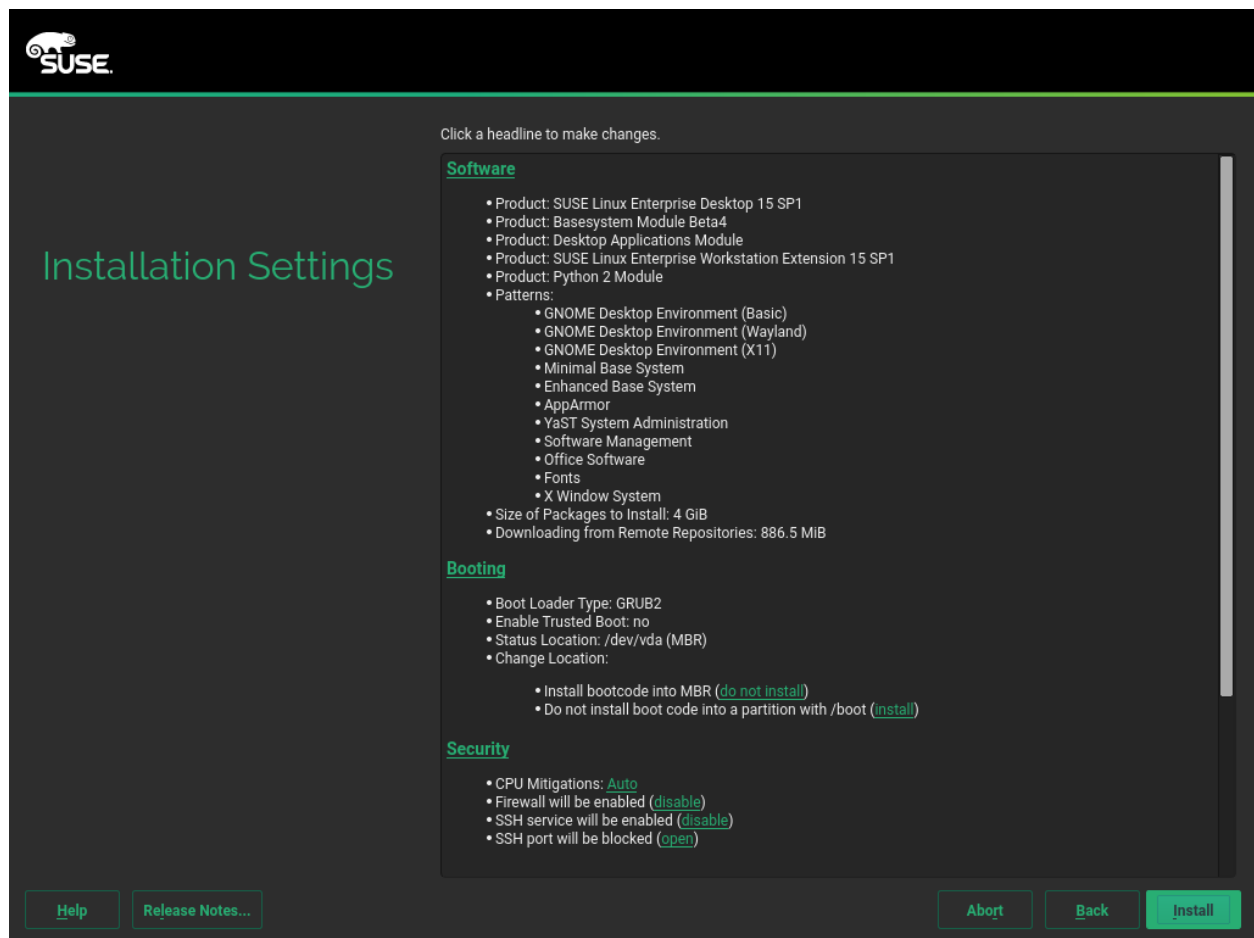


## Tip: Passwords and Keyboard Layout

It is recommended to only use characters that are available on an English keyboard. In case of a system error or when you need to start your system in rescue mode a localized keyboard might not be available.

In some situations it is preferred to access the system remotely via SSH using a public key. This screen allows you to select a public key (file extension `.pub`) from a USB stick, a CD/DVD, or even from an existing partition. See *Book "Deployment Guide", Chapter 4 "Installation Steps", Section 4.13 "Authentication for the System Administrator "root"'* for more information. You can also add the public SSH key later (see *Book "Deployment Guide", Chapter 4 "Installation Steps", Section 4.13 "Authentication for the System Administrator "root"'*, *Adding a Public SSH Key for User root*). Proceed with *Next*.

## 1.1.12 Installation Settings



Use the *Installation Settings* screen to review and—if necessary—change several proposed installation settings. The current configuration is listed for each setting. To change it, click the headline. Some settings, such as firewall or SSH can directly be changed by clicking the respective links.

### Tip: Remote Access

Changes you can make here, can also be made later at any time from the installed system. However, if you need remote access directly after the installation, you should check the *Security* settings.

#### Software

The scope of the installation is defined by the modules and extensions you have chosen for this installation. However, depending on your selection, not all packages available in a module are selected for installation.

Clicking *Software* opens the *Software Selection and System Tasks* screen, where you can change the software selection by selecting or deselecting patterns. Each pattern contains several software packages needed for specific functions (for example, *KVM Host Server*). For a more detailed selection based on software packages to install, select *Details* to switch to the *YaST Software Manager*. See *Book "Deployment Guide", Chapter 13 "Installing or Removing Software"* for more information.

### **Booting**

This section shows the boot loader configuration. Changing the defaults is only recommended if really needed. Refer to *Book "Administration Guide", Chapter 12 "The Boot Loader GRUB 2"* for details.

### **Security**

The *CPU Mitigations* refer to kernel boot command line parameters for software mitigations that have been deployed to prevent CPU side-channel attacks. Click the highlighted entry to choose a different option. For details, see *Book "Administration Guide", Chapter 12 "The Boot Loader GRUB 2" CPU Mitigations*.

By default, the Firewall is enabled with all network interfaces configured for the public zone. See *Book "Security Guide", Chapter 16 "Masquerading and Firewalls", Section 16.4 "firewall"* for configuration details.

The SSH service is enabled by default, its port (22) is open. Click *enable and open* to toggle these settings. Note that if SSH is disabled, logging in from remote will not be possible.

### **Network Configuration**

Displays the current network configuration. Click *Network Configuration* to change the settings. For details, see *Book "Administration Guide", Chapter 17 "Basic Networking", Section 17.4 "Configuring a Network Connection with YaST"*.

### **Kdump**

Kdump saves the memory image ("core dump") to the file system in case the kernel crashes. This enables you to find the cause of the crash by debugging the dump file. Kdump is preconfigured and enabled by default. See *Book "System Analysis and Tuning Guide", Chapter 17 "Kexec and Kdump", Section 17.7 "Basic Kdump Configuration"* for more information.

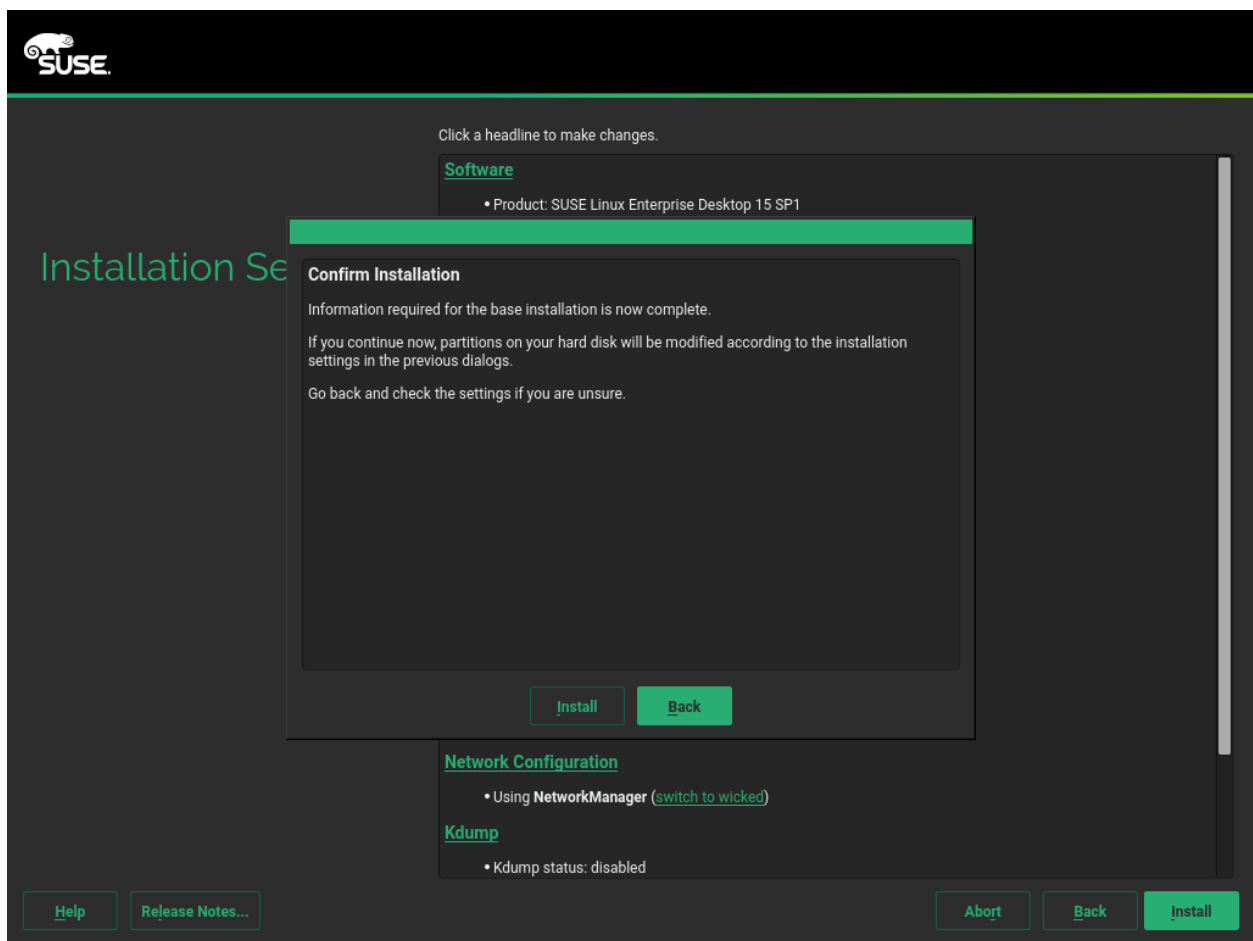
### **Default Systemd Target**

SUSE Linux Enterprise Desktop boots into a graphical desktop by default. Since it does not make much sense to run a desktop system from the command line, it is recommended to not change this setting.

### System

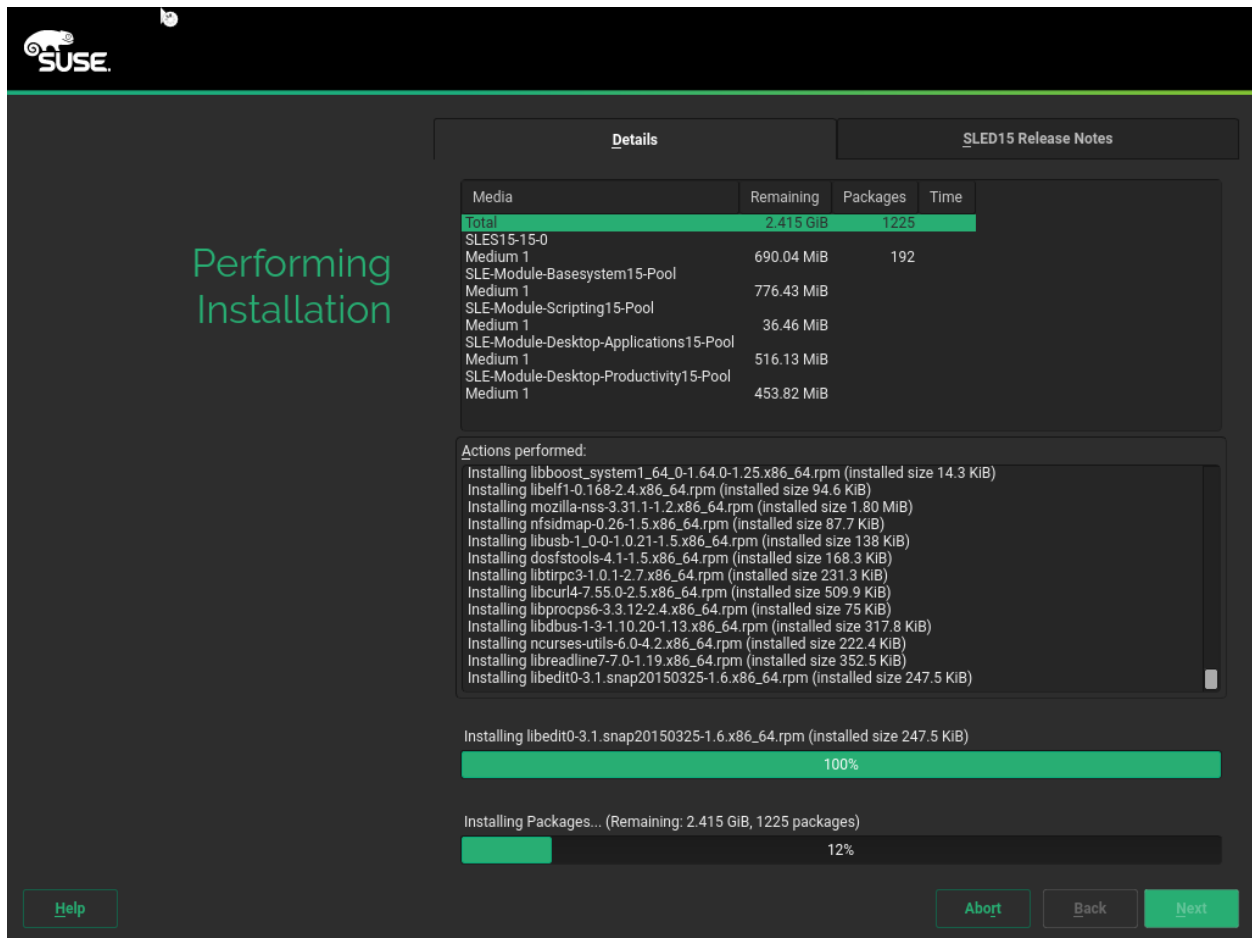
View detailed hardware information by clicking *System*. In the resulting screen you can also change *Kernel Settings*—see *Book “Deployment Guide”, Chapter 4 “Installation Steps”, Section 4.14.6 “System”* for more information.

## 1.1.13 Start the Installation



After you have finalized the system configuration on the *Installation Settings* screen, click *Install*. Depending on your software selection you may need to agree to license agreements before the installation confirmation screen pops up. Up to this point no changes have been made to your system. After you click *Install* a second time, the installation process starts.

## 1.1.14 The Installation Process



During the installation, the progress is shown in detail on the *Details* tab. The *SUSE Linux Enterprise Desktop Release Notes* tab shows important information; reading them is recommended.

After the installation routine has finished, the computer is rebooted into the installed system. Log in and start YaST to fine-tune the system. If you are not using a graphical desktop or are working from remote, refer to *Book "Administration Guide", Chapter 5 "YaST in Text Mode"* for information on using YaST from a terminal.

## 1.2 Installing without Registration

If you perform an installation without connecting to a registration server, you cannot register your system during the installation. Therefore you will not be able to receive the repository configuration for modules and extensions from the registration server. To enable a regular installation, SUSE offers a second installation medium, the SLE-15-SP1-Packages image.



## Note: Registering SUSE Linux Enterprise Desktop

Your system and extensions need to be registered in order to retrieve updates and to be eligible for support. If you do not register during the installation, you can do so at any time later from the running system. To do so, run *YaST > Product Registration*.

To perform the installation without registration, make sure the contents of the SLE-15-SP1-Packages image can be accessed during the installation. This can be achieved by copying it to a local hard disk or a removable flash disk or by making it available in the local network. Choose a method that is supported by your hardware.



## Tip: Copying Data from the SLE-15-SP1-Packages Image to a Removable Flash Disk

To copy the contents of the image to a removable flash disk, use the following command.

```
tux > sudo dd if=PATH_TO_IMAGE
of=FLASH_STORAGE_PARTITION bs=4M && sync
```

PATH\_TO\_IMAGE needs to be replaced with the relative or absolute path to this image file. FLASH\_STORAGE\_PARTITION needs to be replaced with the path to a partition on the flash device (usually there is just one). To identify the device, and its partition(s), insert it and use the commands shown in the example below:

```
root # grep -Ff <(hwinfo --disk --short) <(hwinfo --usb --short)
disk:
  /dev/sdc          General USB Flash Disk
root # fdisk -l /dev/sdc | grep -e "^/dev"
/dev/sdc1 *        2048 31490047 31488000 15G 83 Linux
```

In this case the command to use would be for example:

```
dd if=/tmp/SLE-15-SP1-Packages-x86_64-DVD1.iso \
of=/dev/sdc1 bs=4M && sync
```

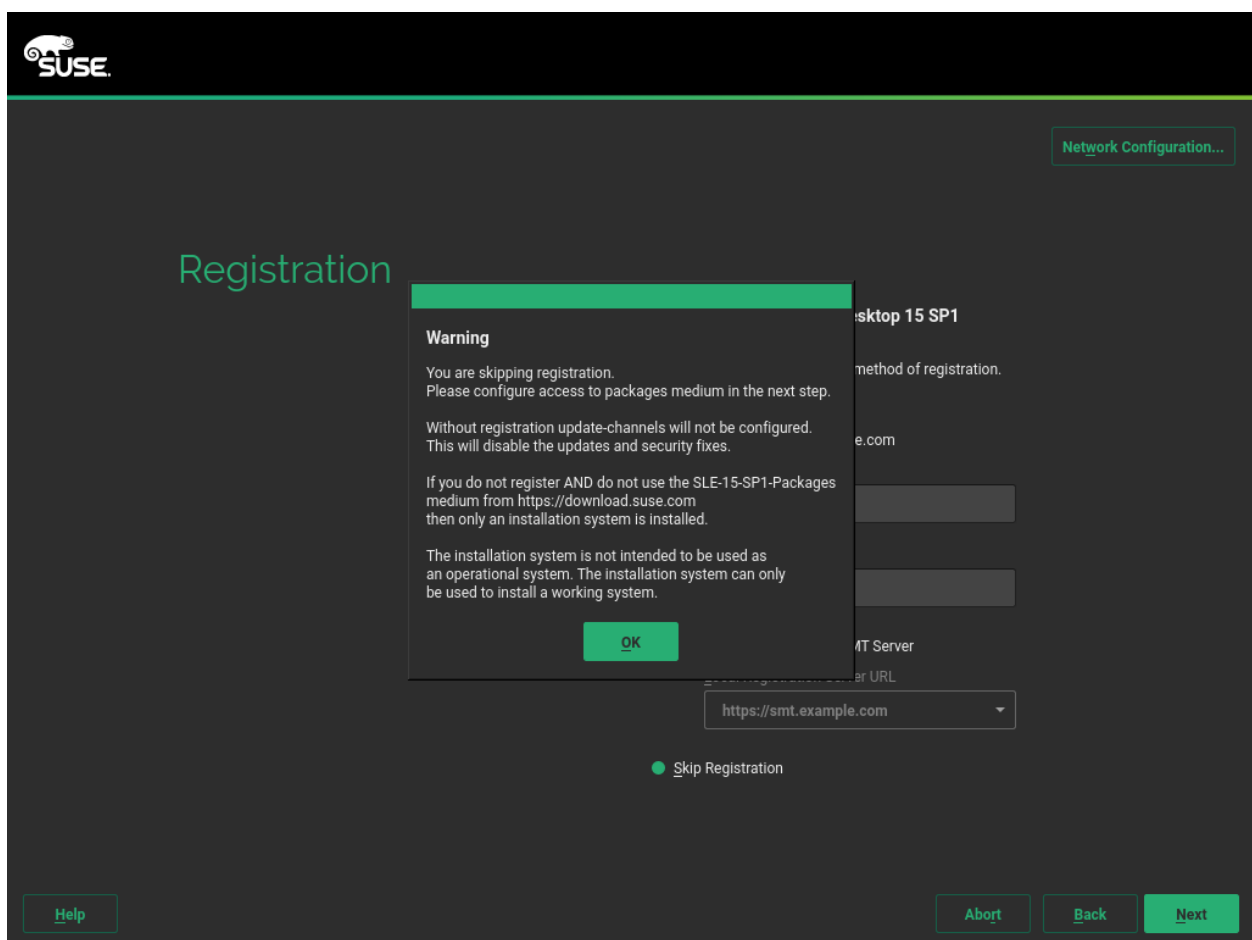
Make sure a partition with sufficient size (6 GB or more) exists on the device. It also must not be mounted when running the **dd** command. Note that all data on the partition will be erased!

## 1.2.1 Starting the Installation without Registration

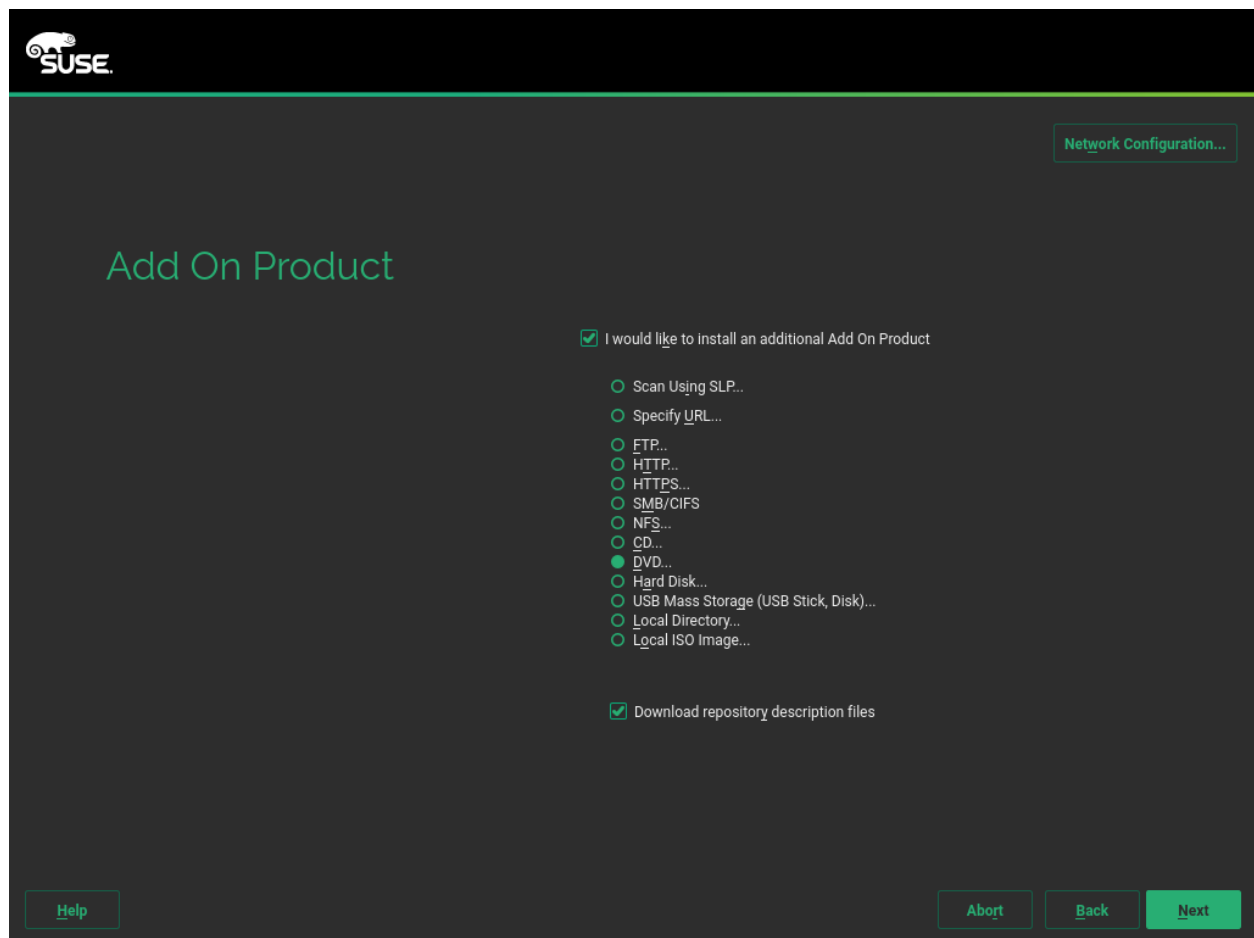
The installation follows the same workflow as outlined in *Section 1.1, "The Default Installation Procedure"*, only the steps for registering the system and adding modules/extensions differ. To start the installation, perform the steps *Section 1.1.1, "Language, Keyboard, and Product Selection"* to *Section 1.1.3, "Network Settings"* from *Section 1.1, "The Default Installation Procedure"*.

## 1.2.2 Skipping Registration

On the *Registration* screen activate *Skip Registration*. Accept the warning with *OK* and proceed with *Next*.



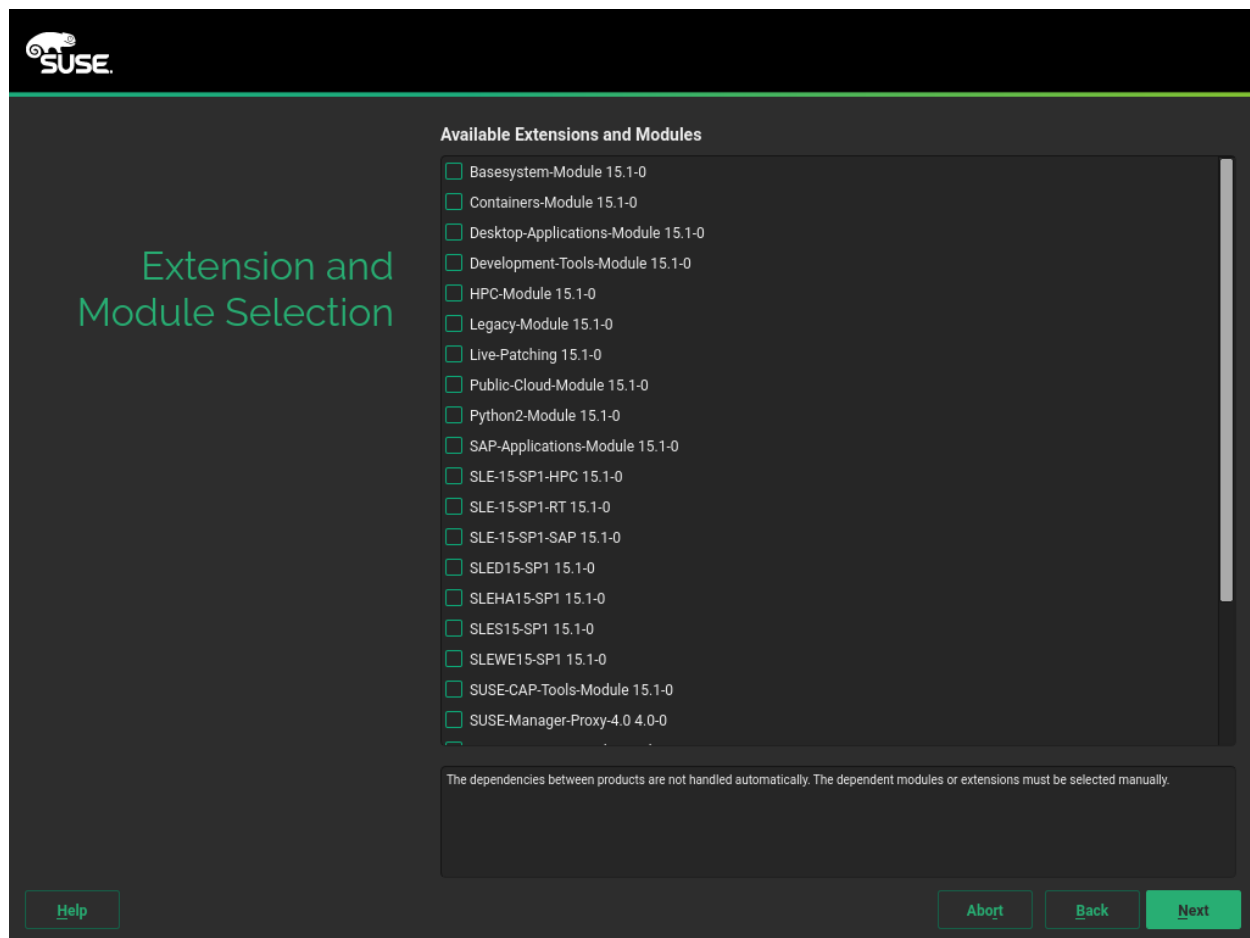
## 1.2.3 Accessing the SLE-15-SP1-Packages Image



On the *Add On Product* dialog, activate *I would like to install an additional Add On Product* and specify the source for the SLE-15-SP1-Packages image. Check *Download repository description files* to download the files describing the repository now. If deactivated, they will be downloaded after the installation starts. Proceed with *Next*. If you chose *DVD* as the data source, you will be prompted to insert the media.



## 1.2.4 Selecting Extensions and Modules



On the *Extension and Module Selection* dialog you need to select a product, at least one module, and optionally, one or more extensions.

The SLE-15-SP1-Packages images contain extensions and modules for all SUSE Linux Enterprise products. Make sure to only select modules and extensions listed below, otherwise you will end up with a system that may fail to install and is not covered by SUSE support.

### Product

Selecting a product is mandatory. Choose *SLED15-SP1 15.1-0*.

### Modules

Modules extend the functionality of SUSE Linux Enterprise Desktop and are free of charge. Installing the *Basesystem-Module 15.1-0* is required. It is also recommended to install the *Desktop-Applications-Module 15.1-0*.

Note that most modules depend on other modules. These dependencies cannot be resolved automatically here. Make sure to manually solve the dependencies, otherwise the installation will fail later on. Refer to the following list for details.

**Basesystem-Module 15.1-0.** This module adds a basic system on top of the Installer. It is required by all other modules and extensions. The scope of an installation that only contains the base system is comparable to the installation pattern *minimal system* of previous SUSE Linux Enterprise Desktop versions. *Dependencies:* None

**Desktop-Applications-Module 15.1-0.** Adds a graphical user interface and essential desktop applications to the system. *Dependencies:* Basesystem

**Development-Tools-Module 15.1-0.** Contains compilers (including `gcc`) and libraries required for compiling and debugging applications.

**Python 2 Module 15.1-0.** SUSE Linux Enterprise 15SP 1 uses Python version 3. This module contains the Python 2 runtime and modules. *Dependencies:* Basesystem

#### SUSE Linux Enterprise Workstation Extension (*SLEWE15-1 15.1-0*)

Contains additional desktop tools such as an office suite or multimedia software such as music and video players. The SUSE Linux Enterprise Workstation Extension for SUSE Linux Enterprise Desktop is free of charge and does not require an additional registration code. Installing *SLEWE15-1 15.1-0* is recommended.



## Warning: Forbidden Selections

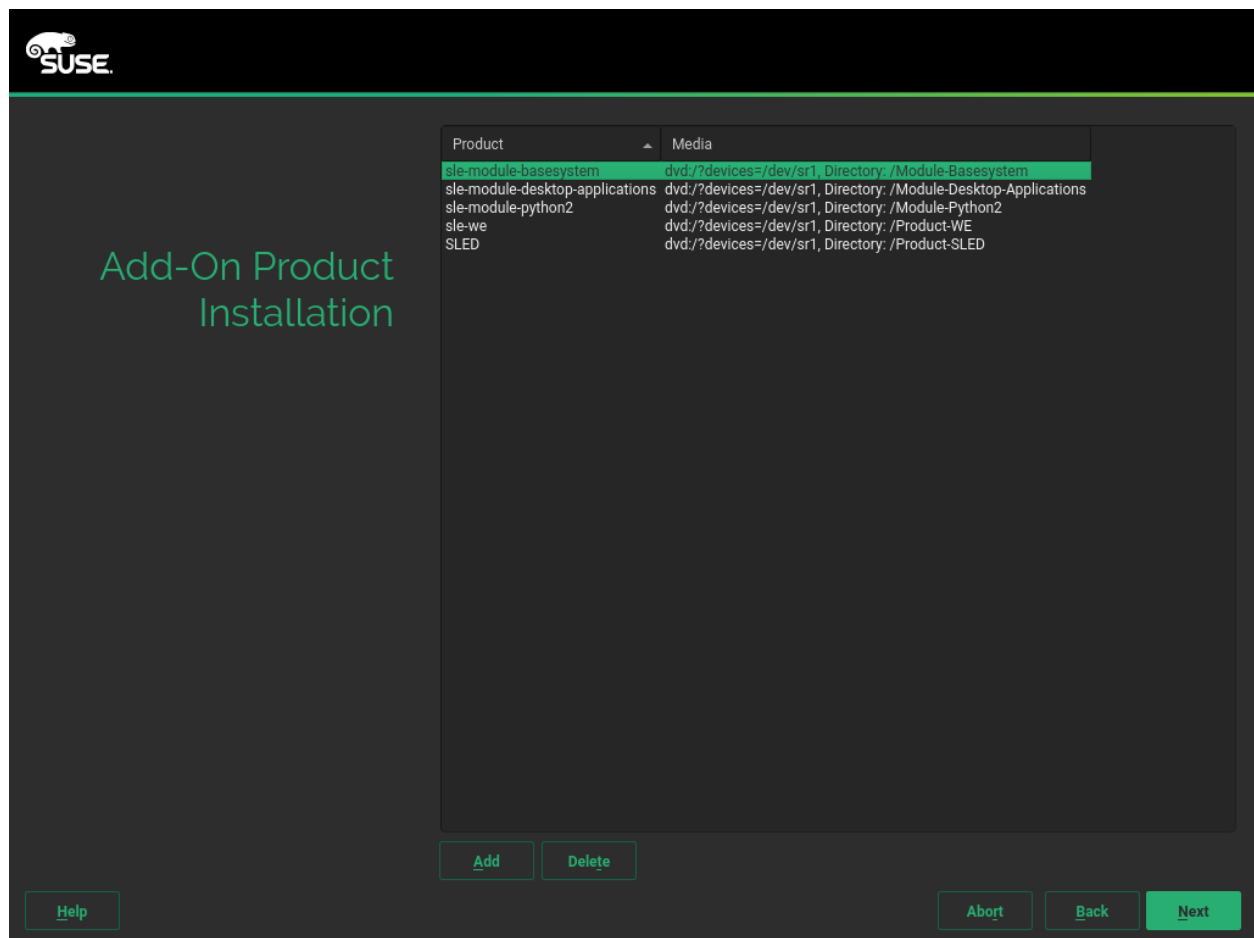
Do *not* install any of the following selections on SUSE Linux Enterprise Desktop, otherwise you will end up with a system that may fail to install and is not covered by SUSE support.

- *Containers-Module 15.1-0*
- *HPC-Module 15.1-0*
- *Legacy-Module 15.1-0*
- *Live-Patching 15.1-0*
- *Public-Cloud-Module 15.1-0*
- *SAP-Applications-Module 15.1-0*
- *SLE-15-1-HPC 15.1-0*
- *SLE-15-1-RT 15.1-0*
- *SLE-15-1-SAP 15.1-0*
- *SLEHA15-1 15.1-0*

- *SLES15-1 15.1-0*
- *Server-Applications-Module 15.1-0*
- *Web-Scripting-Module 15.1-0*

When you have finished selecting modules and extensions, proceed with *Next*.

## 1.2.5 Confirming the Extensions and Module Selection



All modules selected for installation are listed on the *Add-On Product Installation* dialog. To change the list, use the *Add* or *Delete* options. Using *Add* you may optionally add other add-on products. Proceed with the installation with *Next*.

## 1.2.6 Finalizing the Installation

From this point on, the installation follows the same path as the default installation. Proceed with the step > *Section 1.1.7, "System Role"* from *Section 1.1, "The Default Installation Procedure"*.

# 2 Legal Notice

Copyright© 2006– 2019 SUSE LLC and contributors. All rights reserved.

Permission is granted to copy, distribute and/or modify this document under the terms of the GNU Free Documentation License, Version 1.2 or (at your option) version 1.3; with the Invariant Section being this copyright notice and license. A copy of the license version 1.2 is included in the section entitled "GNU Free Documentation License".

For SUSE trademarks, see <http://www.suse.com/company/legal/>. All other third-party trademarks are the property of their respective owners. Trademark symbols (®, ™ etc.) denote trademarks of SUSE and its affiliates. Asterisks (\*) denote third-party trademarks.

All information found in this book has been compiled with utmost attention to detail. However, this does not guarantee complete accuracy. Neither SUSE LLC, its affiliates, the authors, nor the translators shall be held liable for possible errors or the consequences thereof.

### GNU Free Documentation License

Copyright (C) 2000, 2001, 2002 Free Software Foundation, Inc. 51 Franklin St, Fifth Floor, Boston, MA 02110-1301 USA. Everyone is permitted to copy and distribute verbatim copies of this license document, but changing it is not allowed.

#### 0. PREAMBLE

The purpose of this License is to make a manual, textbook, or other functional and useful document "free" in the sense of freedom: to assure everyone the effective freedom to copy and redistribute it, with or without modifying it, either commercially or non-commercially. Secondarily, this License preserves for the author and publisher a way to get credit for their work, while not being considered responsible for modifications made by others.

This License is a kind of "copyleft", which means that derivative works of the document must themselves be free in the same sense. It complements the GNU General Public License, which is a copyleft license designed for free software.

We have designed this License to use it for manuals for free software, because free software needs free documentation: a free program should come with manuals providing the same freedoms that the software does. But this License is not limited to software manuals; it can be used for any textual work, regardless of subject matter or whether it is published as a printed book. We recommend this License principally for works whose purpose is instruction or reference.

#### 1. APPLICABILITY AND DEFINITIONS

This License applies to any manual or other work, in any medium, that contains a notice placed by the copyright holder saying it can be distributed under the terms of this License. Such a notice grants a world-wide, royalty-free license, unlimited in duration, to use that work under the conditions stated herein. The "Document", below, refers to any such manual or work. Any member of the public is a licensee, and is addressed as "you". You accept the license if you copy, modify or distribute the work in a way requiring permission under copyright law.

A "Modified Version" of the Document means any work containing the Document or a portion of it, either copied verbatim, or with modifications and/or translated into another language.

A "Secondary Section" is a named appendix or a front-matter section of the Document that deals exclusively with the relationship of the publishers or authors of the Document to the Document's overall subject (or to related matters) and contains nothing that could fall directly within that overall subject. (Thus, if the Document is in part a textbook of mathematics, a Secondary Section may not explain any mathematics.) The relationship could be a matter of historical connection with the subject or with related matters, or of legal, commercial, philosophical, ethical or political position regarding them.

The "Invariant Sections" are certain Secondary Sections whose titles are designated, as being those of Invariant Sections, in the notice that says that the Document is released under this License. If a section does not fit the above definition of Secondary then it is not allowed to be designated as Invariant. The Document may contain zero Invariant Sections. If the Document does not identify any Invariant Sections then there are none.

The "Cover Texts" are certain short passages of text that are listed, as Front-Cover Texts or Back-Cover Texts, in the notice that says that the Document is released under this License. A Front-Cover Text may be at most 5 words, and a Back-Cover Text may be at most 25 words.

A "Transparent" copy of the Document means a machine-readable copy, represented in a format whose specification is available to the general public, that is suitable for revising the document straightforwardly with generic text editors or (for images composed of pixels) generic paint programs or (for drawings) some widely available drawing editor, and that is suitable for input to text formatters or for automatic translation to a variety of formats suitable for input to text formatters. A copy made in an otherwise Transparent file format whose markup, or absence of markup, has been arranged to thwart or discourage subsequent modification by readers is not Transparent. An image format is not Transparent if used for any substantial amount of text. A copy that is not "Transparent" is called "Opaque".

Examples of suitable formats for Transparent copies include plain ASCII without markup, Texinfo input format, LaTeX input format, SGML or XML using a publicly available DTD, and standard-conforming simple HTML, PostScript or PDF designed for human modification. Examples of transparent image formats include PNG, XCF and JPG. Opaque formats include proprietary formats that can be read and edited only by proprietary word processors, SGML or XML for which the DTD and/or processing tools are not generally available, and the machine-generated HTML, PostScript or PDF produced by some word processors for output purposes only.

The "Title Page" means, for a printed book, the title page itself, plus such following pages as are needed to hold, legibly, the material this License requires to appear in the title page. For works in formats which do not have any title page as such, "Title Page" means the text near the most prominent appearance of the work's title, preceding the beginning of the body of the text.

A section "Entitled XYZ" means a named subunit of the Document whose title either is precisely XYZ or contains XYZ in parentheses following text that translates XYZ in another language. (Here XYZ stands for a specific section name mentioned below, such as "Acknowledgements", "Dedications", "Endorsements", or "History".) To "Preserve the Title" of such a section when you modify the Document means that it remains a section "Entitled XYZ" according to this definition.

The Document may include Warranty Disclaimers next to the notice which states that this License applies to the Document. These Warranty Disclaimers are considered to be included by reference in this License, but only as regards disclaiming warranties: any other implication that these Warranty Disclaimers may have is void and has no effect on the meaning of this License.

## 2. VERBATIM COPYING

You may copy and distribute the Document in any medium, either commercially or non-commercially, provided that this License, the copyright notices, and the license notice saying this License applies to the Document are reproduced in all copies, and that you add no other conditions whatsoever to those of this License. You may not use technical measures to obstruct or control the reading or further copying of the copies you make or distribute. However, you may accept compensation in exchange for copies. If you distribute a large enough number of copies you must also follow the conditions in section 3.

You may also lend copies, under the same conditions stated above, and you may publicly display copies.

## 3. COPYING IN QUANTITY

If you publish printed copies (or copies in media that commonly have printed covers) of the Document, numbering more than 100, and the Document's license notice requires Cover Texts, you must enclose the copies in covers that carry, clearly and legibly, all these Cover Texts: Front-Cover Texts on the front cover, and Back-Cover Texts on the back cover. Both covers must also clearly and legibly identify you as the publisher of these copies. The front cover must present the full title with all words of the title equally prominent and visible. You may add other material on the covers in addition. Copying with changes limited to the covers, as long as they preserve the title of the Document and satisfy these conditions, can be treated as verbatim copying in other respects.

If the required texts for either cover are too voluminous to fit legibly, you should put the first ones listed (as many as fit reasonably) on the actual cover, and continue the rest onto adjacent pages.

If you publish or distribute Opaque copies of the Document numbering more than 100, you must either include a machine-readable Transparent copy along with each Opaque copy, or state in or with each Opaque copy a computer-network location from which the general network-using public has access to download using public-standard network protocols a complete Transparent copy of the Document, free of added material. If you use the latter option, you must take reasonably prudent steps, when you begin distribution of Opaque copies in quantity, to ensure that this Transparent copy will remain thus accessible at the stated location until at least one year after the last time you distribute an Opaque copy (directly or through your agents or retailers) of that edition to the public.

It is requested, but not required, that you contact the authors of the Document well before redistributing any large number of copies, to give them a chance to provide you with an updated version of the Document.

## 4. MODIFICATIONS

You may copy and distribute a Modified Version of the Document under the conditions of sections 2 and 3 above, provided that you release the Modified Version under precisely this License, with the Modified Version filling the role of the Document, thus licensing distribution and modification of the Modified Version to whoever possesses a copy of it. In addition, you must do these things in the Modified Version:

- A. Use in the Title Page (and on the covers, if any) a title distinct from that of the Document, and from those of previous versions (which should, if there were any, be listed in the History section of the Document). You may use the same title as a previous version if the original publisher of that version gives permission.
- B. List on the Title Page, as authors, one or more persons or entities responsible for authorship of the modifications in the Modified Version, together with at least five of the principal authors of the Document (all of its principal authors, if it has fewer than five), unless they release you from this requirement.
- C. State on the Title page the name of the publisher of the Modified Version, as the publisher.
- D. Preserve all the copyright notices of the Document.
- E. Add an appropriate copyright notice for your modifications adjacent to the other copyright notices.
- F. Include, immediately after the copyright notices, a license notice giving the public permission to use the Modified Version under the terms of this License, in the form shown in the Addendum below.
- G. Preserve in that license notice the full lists of Invariant Sections and required Cover Texts given in the Document's license notice.
- H. Include an unaltered copy of this License.
- I. Preserve the section Entitled "History", Preserve its Title, and add to it an item stating at least the title, year, new authors, and publisher of the Modified Version as given on the Title Page. If there is no section Entitled "History" in the Document, create one stating the title, year, authors, and publisher of the Document as given on its Title Page, then add an item describing the Modified Version as stated in the previous sentence.
- J. Preserve the network location, if any, given in the Document for public access to a Transparent copy of the Document, and likewise the network locations given in the Document for previous versions it was based on. These may be placed in the "History" section. You may omit a network location for a work that was published at least four years before the Document itself, or if the original publisher of the version it refers to gives permission.
- K. For any section Entitled "Acknowledgements" or "Dedications", Preserve the Title of the section, and preserve in the section all the substance and tone of each of the contributor acknowledgements and/or dedications given therein.
- L. Preserve all the Invariant Sections of the Document, unaltered in their text and in their titles. Section numbers or the equivalent are not considered part of the section titles.

- M. Delete any section Entitled "Endorsements". Such a section may not be included in the Modified Version.
- N. Do not retitle any existing section to be Entitled "Endorsements" or to conflict in title with any Invariant Section.
- O. Preserve any Warranty Disclaimers.

If the Modified Version includes new front-matter sections or appendices that qualify as Secondary Sections and contain no material copied from the Document, you may at your option designate some or all of these sections as invariant. To do this, add their titles to the list of Invariant Sections in the Modified Version's license notice. These titles must be distinct from any other section titles. You may add a section Entitled "Endorsements", provided it contains nothing but endorsements of your Modified Version by various parties—for example, statements of peer review or that the text has been approved by an organization as the authoritative definition of a standard.

You may add a passage of up to five words as a Front-Cover Text, and a passage of up to 25 words as a Back-Cover Text, to the end of the list of Cover Texts in the Modified Version. Only one passage of Front-Cover Text and one of Back-Cover Text may be added by (or through arrangements made by) any one entity. If the Document already includes a cover text for the same cover, previously added by you or by arrangement made by the same entity you are acting on behalf of, you may not add another; but you may replace the old one, on explicit permission from the previous publisher that added the old one.

The author(s) and publisher(s) of the Document do not by this License give permission to use their names for publicity for or to assert or imply endorsement of any Modified Version.

## 5. COMBINING DOCUMENTS

You may combine the Document with other documents released under this License, under the terms defined in section 4 above for modified versions, provided that you include in the combination all of the Invariant Sections of all of the original documents, unmodified, and list them all as Invariant Sections of your combined work in its license notice, and that you preserve all their Warranty Disclaimers.

The combined work need only contain one copy of this License, and multiple identical Invariant Sections may be replaced with a single copy. If there are multiple Invariant Sections with the same name but different contents, make the title of each such section unique by adding at the end of it, in parentheses, the name of the original author or publisher of that section if known, or else a unique number. Make the same adjustment to the section titles in the list of Invariant Sections in the license notice of the combined work.

In the combination, you must combine any sections Entitled "History" in the various original documents, forming one section Entitled "History"; likewise combine any sections Entitled "Acknowledgements", and any sections Entitled "Dedications". You must delete all sections Entitled "Endorsements".

## 6. COLLECTIONS OF DOCUMENTS

You may make a collection consisting of the Document and other documents released under this License, and replace the individual copies of this License in the various documents with a single copy that is included in the collection, provided that you follow the rules of this License for verbatim copying of each of the documents in all other respects.

You may extract a single document from such a collection, and distribute it individually under this License, provided you insert a copy of this License into the extracted document, and follow this License in all other respects regarding verbatim copying of that document.

## 7. AGGREGATION WITH INDEPENDENT WORKS

A compilation of the Document or its derivatives with other separate and independent documents or works, in or on a volume of a storage or distribution medium, is called an "aggregate" if the copyright resulting from the compilation is not used to limit the legal rights of the compilation's users beyond what the individual works permit. When the Document is included in an aggregate, this License does not apply to the other works in the aggregate which are not themselves derivative works of the Document.

If the Cover Text requirement of section 3 is applicable to these copies of the Document, then if the Document is less than one half of the entire aggregate, the Document's Cover Texts may be placed on covers that bracket the Document within the aggregate, or the electronic equivalent of covers if the Document is in electronic form. Otherwise they must appear on printed covers that bracket the whole aggregate.

## 8. TRANSLATION

Translation is considered a kind of modification, so you may distribute translations of the Document under the terms of section 4. Replacing Invariant Sections with translations requires special permission from their copyright holders, but you may include translations of some or all Invariant Sections in addition to the original versions of these Invariant Sections. You may include a translation of this License, and all the license notices in the Document, and any Warranty Disclaimers, provided that you also include the original English version of this License and the original versions of those notices and disclaimers. In case of a disagreement between the translation and the original version of this License or a notice or disclaimer, the original version will prevail.

If a section in the Document is Entitled "Acknowledgements", "Dedications", or "History", the requirement (section 4) to Preserve its Title (section 1) will typically require changing the actual title.

## 9. TERMINATION

You may not copy, modify, sublicense, or distribute the Document except as expressly provided for under this License. Any other attempt to copy, modify, sublicense or distribute the Document is void, and will automatically terminate your rights under this License. However, parties who have received copies, or rights, from you under this License will not have their licenses terminated so long as such parties remain in full compliance.

## 10. FUTURE REVISIONS OF THIS LICENSE

The Free Software Foundation may publish new, revised versions of the GNU Free Documentation License from time to time. Such new versions will be similar in spirit to the present version, but may differ in detail to address new problems or concerns. See <http://www.gnu.org/copyleft/>.

Each version of the License is given a distinguishing version number. If the Document specifies that a particular numbered version of this License "or any later version" applies to it, you have the option of following the terms and conditions either of that specified version or of any later version that has been published (not as a draft) by the Free Software Foundation. If the Document does not specify a version number of this License, you may choose any version ever published (not as a draft) by the Free Software Foundation.

ADDENDUM: How to use this License for your documents

```
Copyright (c) YEAR YOUR NAME.  
Permission is granted to copy, distribute and/or modify this document
```

under the terms of the GNU Free Documentation License, Version 1.2 or any later version published by the Free Software Foundation; with no Invariant Sections, no Front-Cover Texts, and no Back-Cover Texts. A copy of the license is included in the section entitled “GNU Free Documentation License”.

If you have Invariant Sections, Front-Cover Texts and Back-Cover Texts, replace the “with...Texts.” line with this:

with the Invariant Sections being LIST THEIR TITLES, with the Front-Cover Texts being LIST, and with the Back-Cover Texts being LIST.

If you have Invariant Sections without Cover Texts, or some other combination of the three, merge those two alternatives to suit the situation.

If your document contains nontrivial examples of program code, we recommend releasing these examples in parallel under your choice of free software license, such as the GNU General Public License, to permit their use in free software.